



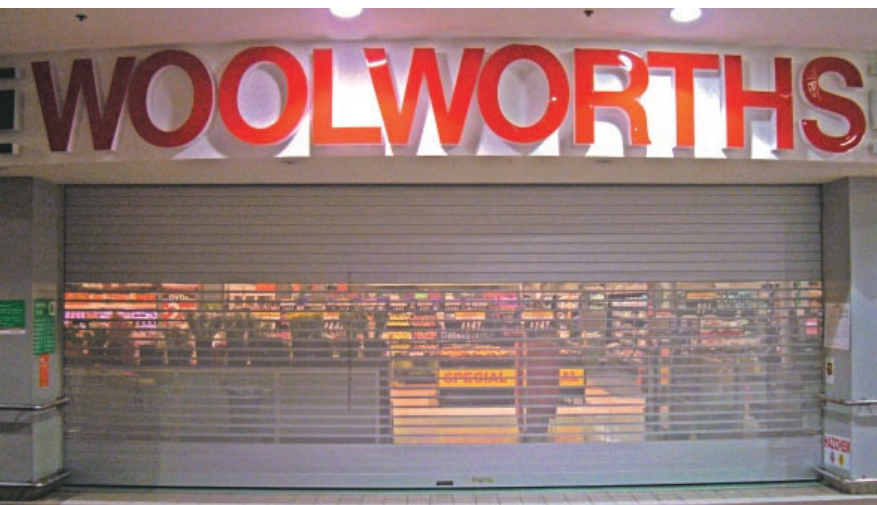
Monarch

Renlita Overhead Doors®

SERIES 3 ALUMINIUM

The Ultimate in Large Span Security

The Monarch Series 3 Aluminium Shutter range are the ultimate in design for visual appearance and maximum security. Whilst visually attractive and eminently strong, Monarch's Series 3 Doors are versatile enough to compliment various sized apertures and can be manufactured in many different designs customised to suit your design brief.



Applications:

The Series 3 Aluminium Shutter is suitable for many commercial applications including the following:

- Shopping centers
- Bar tops
- Store fronts
- Sports complexes
- Arcades
- Countertops
- Doorways
- Clubs

Opening sizes up to - 393.7" wide
236.2" high

Specifications:

Curtain - Constructed from extruded aluminium slats with a face depth of 3.5" x 0.06". Nylon end clips are fitted to prevent lateral movement and supply smooth operation.

Optional perforations of 0.3" holes at 0.4" centres, slotting of 6.3" x 2.4" or 23.6" x 2.4" are available. Clear acrylic panels can be fitted behind the perforation/slotting for a dust seal. Perforated slats offer approximately 32% free air flow. Slotted slats offer approximately 50% free air flow.

Side Guide - 4.1" x 1.6" extruded aluminium with schlegel nylofelt buffer for quiet operation.

Locking - Doors are generally motorized, but can be fitted with standard two point locking.

Bottom Rail - Extruded aluminium box section manufactured to interlock with the curtain. Bottom rail can be fitted with a PVC seal.

Brackets - Manufactured from 0.4" mild steel.

Roller Drum - Manufactured from 6.5" or 8.6" seamless tube attached to self lubricating bearings rotating on a 1.4" steel shaft. The shaft shall be fitted with helical springs designed to counter-balance the curtain weight throughout its operation. The drum shall be designed to give minimum deflection over the span.

Operation - Normally motorised with 3 phase motor and gearbox fitted with built in limit switched. Doors can be remote controlled to customer requirements.

Finish - Available in powder coat and anodized colors.



Contact Details

Renlita Doors North America, LLC

Mailing Address: P.O. Box B, Bonham, TX 75418

Shipping Address: 220 E First St, Bonham, TX 75418

Phone: 903-583-7500 | Fax: 903-583-7544

Renlita Doors North America, LLC is a licensee of The ARA Group.

Renlita Doors New York City

Metro Area Representative: Susan Oliner, Harrison Leigh, LLC

5 Manor Lane, East Hampton, NY 11937

Phone: 973-477-3886 | Fax: 631-324-3577

Renlita Doors Canada

57 Luella Blvd, Minesing, Ontario L0L 1Y2

Phone: 705-828-0845 | Fax: 705-737-2624

Visit our website: www.renlitadoors.com