



Monarch

Renlita Overhead Doors®

CLEARSPAN POLYCARBONATE

Secure - Functional - Attractive

The Clearspan is a popular design for commercial buildings offering top security together with the ultimate in style and strength. Let your after-hour display add dimension to your product range and take advantage of every marketing opportunity.



Applications:

The Clearspan Shutter is suitable for many commercial applications including the following:

- Shopping centers
- Bar tops
- Store fronts
- Sports complexes
- Arcades
- Countertops
- Doorways
- Clubs

Opening size up to - 157.5" high
236.2" wide

Specifications:

Curtain - Constructed of clear polycarbonate extrusions having a depth of 3.9" interlocking with symmetrical aluminium extruded members of 1.2" to form a continuous hinge. Each aluminium member shall be fitted with moulded end clips to prevent lateral movement and provide smooth operation of side guides.

Side Guide - 1.9" x 1.3" extruded aluminium with false back for concealing fixings. Optional Nylofelt Buffer available.

Locking - Shall be centrally mounted two way Mortice Key Lock or Sliding Shoot Bolt Lock mounted within the bottom rail.

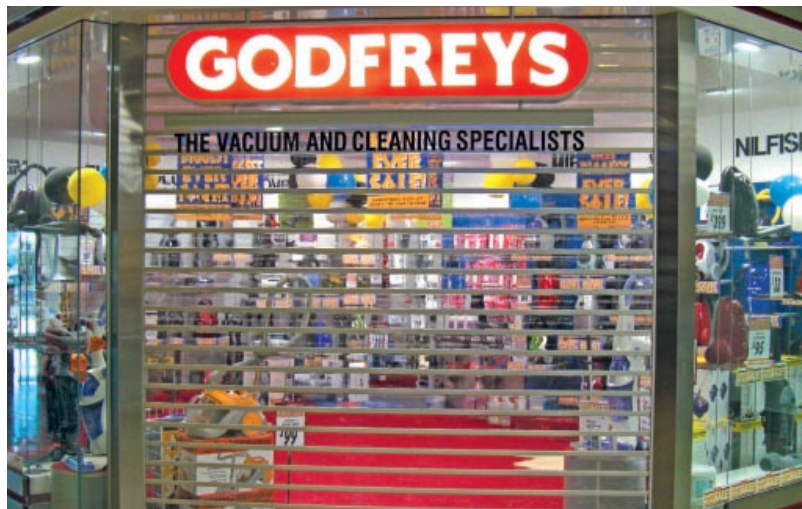
Bottom Rail - 3.5" x 1.9" extruded aluminium section incorporating locking device and concealed locking rods and optional PVC Buffer.

Brackets - Manufactured from 3.5" x 1.6" mild steel.

Roller Drum - Manufactured from 9" spiral ducted tube attached to ball bearing drum wheels rotating on a 1.3" steel shaft. The shaft shall be fitted with helical springs designed to counter-balance the curtain weight throughout its operation. The drum shall be designed to give minimum deflection over the span.

Operation - Manual or motorized depending upon size or requirements.

Mullions - Specially designed one piece extrusion for straight openings and two piece sections that can be set to any angle and shall be used for wide openings and multiple door installations.



Contact Details

Renlita Doors North America, LLC

Mailing Address: P.O. Box B, Bonham, TX 75418

Shipping Address: 220 E First St, Bonham, TX 75418

Phone: 903-583-7500 | Fax: 903-583-7544

Renlita Doors North America, LLC is a licensee of The ARA Group.

Renlita Doors New York City

Metro Area Representative: Susan Oliner, Harrison Leigh, LLC

5 Manor Lane, East Hampton, NY 11937

Phone: 973-477-3886 | Fax: 631-324-3577

Renlita Doors Canada

57 Luella Blvd, Minesing, Ontario L0L 1Y2

Phone: 705-828-0845 | Fax: 705-737-2624

Visit our website: www.renlitadoors.com